

# MANICA PLASTER

## ADHESIVE SEALING SLEEVE THAT CAN BE PLASTERED

### CAN BE PLASTERED

The butyl compound is covered with a polypropylene fabric that can be plastered.

### SPECIAL BUTYL MIX

Thanks to its special modified butyl formulation, it ensures excellent durability even when subjected to thermal stress.

## COMPOSITION

- ① support: non-woven PP fabric
- ② glue: grey adhesive butyl compound
- ③ release liner: PP film



## TECHNICAL DATA

Properties	standard	value	USC units
Initial Tack +23/+5 °C	ASTM D 2979	7,2/13 N	1.6/2.9 lbf
Reaction to fire	EN 13501-1	class E	-
Resistance to temperature	-	-40/+120 °C	-40/+248 °F
Fire resistance rating on plain CLT joint (120 mm), 8 mm joint + MANICA PLASTER(*)	EN 1363-4	EI 90	
Tensile strength MD/CD	EN 12311-1	115/100 N/50 mm	13.1/11.4 lbf/in
Elongation MD/CD	EN 12311-1	100/100 %	-
Resistance to tearing MD/CD	EN 12310	≥ 130/≥ 125 N	≥ 29.23/≥ 28.10 lbf
Joint separation resistance MD/CD	EN 12316-1	≥ 20 N/50 mm	≥ 2.28 lbf/in
Maximum tensile force MD/CD	EN 12317-1	≥ 100/≥ 75 N/50 mm	≥ 11.42/≥ 8.57 lbf/in
Adhesion of class C2E cementitious glue on TNT	EN 12004/EN 1348	0,9 N/mm2	130.53 lbf/in2
Water vapour resistance factor (μ)	EN 1931	approx. 26176	approx. 130 MN·s/g
Application temperature <sup>(1)</sup>	-	+0/+45 °C	+32/+113 °F
Storage temperature <sup>(2)</sup>	-	+0/+50 °C	+32/+122 °F
Solvents	-	no	-
French VOC classification	ISO 16000	A+	-
VOC emissions	EN 16516	very low	-
Exposure to weather	-	4 weeks	-

(1) On dry support and at a temperature > 0 °C. The absence of condensation or frost on the surface must be guaranteed.

(2) Store the product in a cool, dry place for no more than 12 months. It is recommended to store the product at room temperature until application, as it is sensitive to temperature changes. We recommend applying it during the cooler hours in summer and the warmer hours in winter, possibly with the help of a hot air gun.

(\*) For full details and tested configurations, please refer to the manual or contact our technical department.

Waste classification (2014/955/EU): 08 04 10.

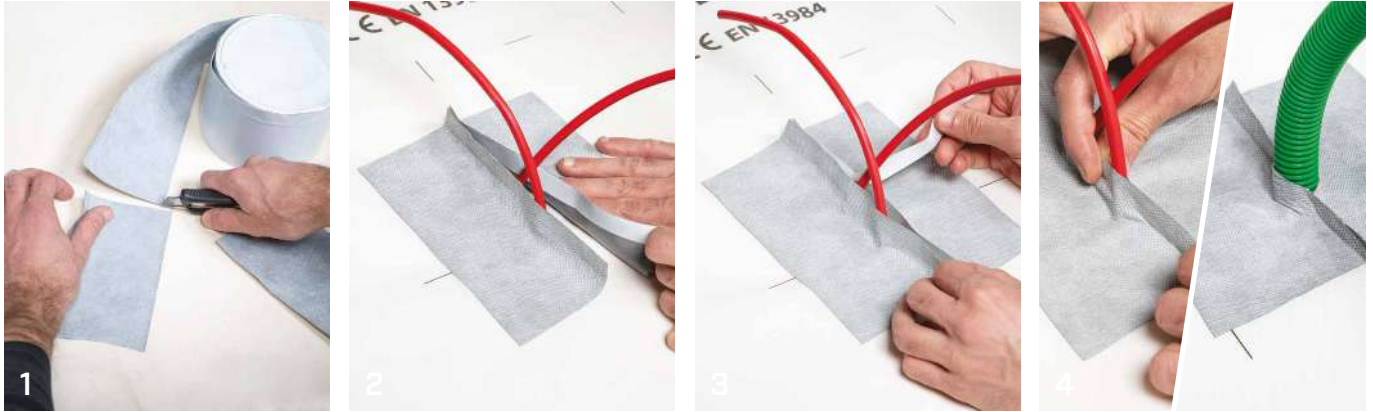
## CODES AND DIMENSIONS

CODE	liner [mm]	B [mm]	s [mm]	L [m]	liner [in]	B [in]	s [mil]	L [ft]	
MANPLA2080	20/80	100	1	10	0.8/3.2	3.9	39	33	6
MANPLA20180	20/180	200	1	10	0.8/7.1	7.9	39	33	2

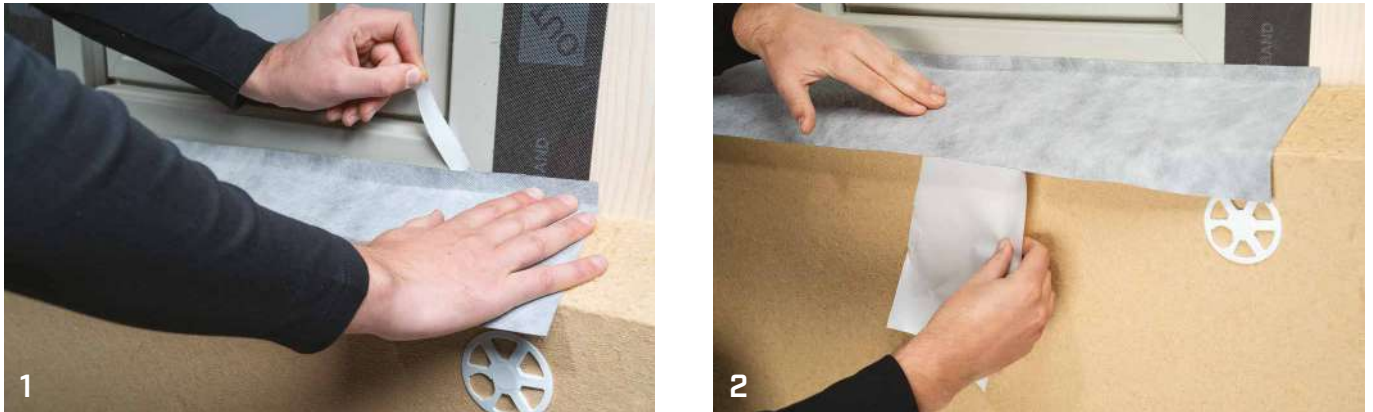


## RECOMMENDATIONS FOR INSTALLATION

### SEALING OF CABLES AND CORRUGATED TUBES THROUGH PIPES




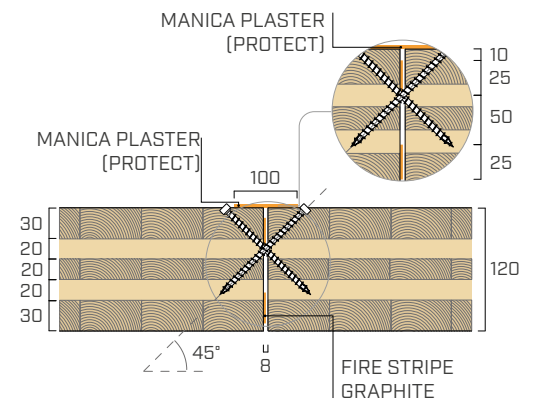
### WINDOW NODE - WATERPROOFING BELOW TIE BEAM



## FIRE TIGHTNESS AND INSULATION

Tests carried out at the CSI laboratory in accordance with EN 1363-4 enabled characterisation of the fire behaviour of several CLT joints sealed with Rothoblaas products.

<b>TIGHTNESS (E)</b>	Cotton swab	<b>&gt; 96 minutes</b>	 <b>EI 90</b>
	Persistent flame		
<b>INSULATION (I)</b>	Time	<b>&gt; 96 minutes</b>	



### TIME SAVING

Thanks to the pre-cut separating film and the product deformation properties, small cables and irregular elements can be sealed without loss of time or accumulation of bulky material.

### SMART

The pre-cut liner makes it suitable for numerous applications, for example along the perimeter of beams and penetrating elements or for sealing windows.